

# KARIBAN

**REFERENCE :** K122

**SIZES :** M/L\_L/XL

**COMPOSITION :**

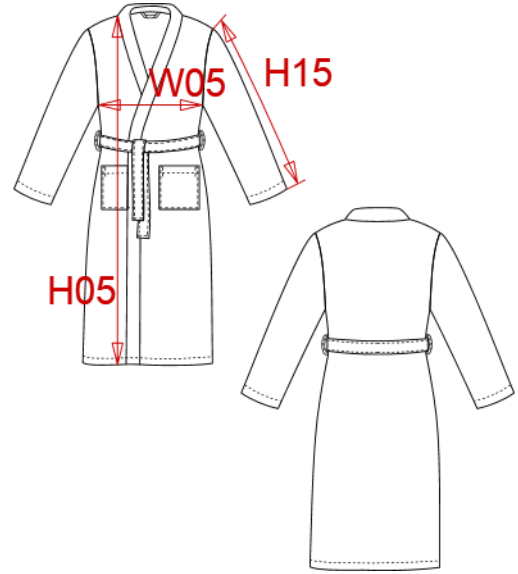
Main fabric : Cotton waffle 220 100%cotton

**WEIGHT :**

Main fabric : 220 gsm

**ARTICLE WEIGHT :**

600 gr/pc



DESCRIPTION
<b>Français :</b> Peignoir kimono nid d'abeille
<b>English :</b> Waffle robe
<b>Nederlands :</b> Kamerjas 'kimono' honingraat
<b>Deutsch :</b> Wafel bademantel
<b>Español :</b> Albornoz kimono punto nido de abeja
<b>Italiano :</b> Accappatoio kimono
<b>Português :</b> Robe favo de mel

COLORS	PANTONE SERIGRAPHIE
White	White
Black	Black

MEASUREMENT						
Description	M/L	L/XL				
<b>H05</b> Hauteur totale / Total height	117	124				
<b>W05</b> 1/2 largeur poitrine / 1/2 chest width	60	64				
<b>H15</b> Longueur manche / Sleeve length	55	58				

CARE LABEL				

PACKING	
Box	30 pcs / box All sizes => L:40cm W:60cm H:40cm GW:14.42kg NW:15.90kg