



## Le sweat-shirt loose femme

Coupe confortable

XS > XXL

300 GSM

### Détails

- Manches raglan
- Côte 1x1 au col, bas de manches et bas de corps
- Bande de propreté intérieur col en chevron
- 1/2 lune intérieur col dans la matière principale

### Composition

Shell - Molleton non brossé  
85% coton biologique filé et peigné , 15% polyester recyclé - 300 GSM  
Tissu lavé , Toucher doux

### Entretien

Wash similar colours together, do not iron on print, wash and iron inside out.



### Pays d'origine

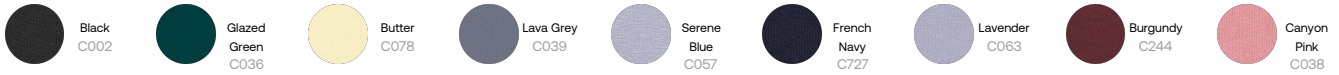
Weaving : Bangladesh  
Dyeing : Bangladesh  
Assembly : Bangladesh



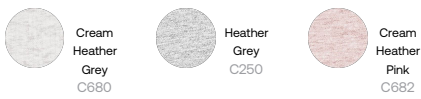
Whites



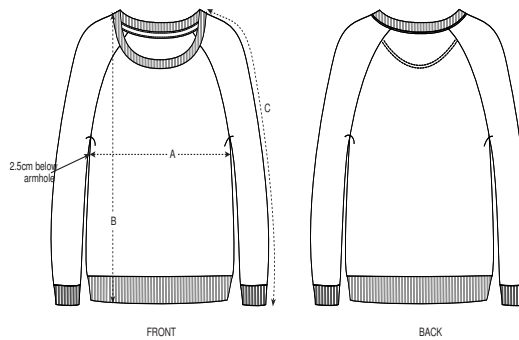
Colors



Essential Heathers



Guide des tailles



Sizes		XS	S	M	L	XL	XXL
A	Half Chest	52.5	55	58	61	64	67
B	Body Length	60	62	64	66	67	68
C	Sleeve Length	64.8	66	67.5	68.8	70	71.2

Emballage

Sizes		XS	S	M	L	XL	XXL
	Pieces/bag	5	5	5	5	5	5
	Pieces/box	20	20	20	20	20	20