

KARIBAN

REFERENCE : K585

SIZES : XS_S_M_L_XL_XXL

COMPOSITION :

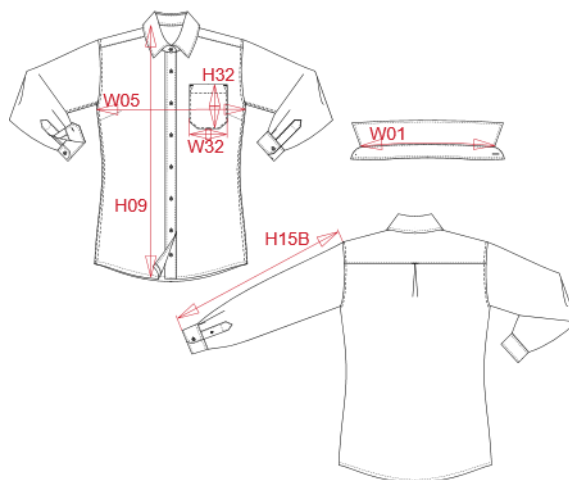
Main fabric : Peached cotton twill - 155 100%cotton
 Main fabric : Cotton / Polyester oxford 70/30 - For inner collar band and inner cuffs 70%cotton / 30%polyester

WEIGHT :

Main fabric : 155 gsm
 Main fabric : 135 gsm

ARTICLE WEIGHT :

230 gr/pc



DESCRIPTION
Français : Chemise coton Nevada manches longues femme
English : Ladies' Nevada long sleeve cotton shirt
Nederlands : Damesoverhemd met lange mouwen van katoen Nevada
Deutsch : Langarm-Baumwollhemd für Damen
Español : Camisa de algodón Nevada de manga larga para mujer
Italiano : Camicia donna Nevada in cotone manica lunga
Português : Camisa Nevada de senhora de manga comprida

COLORS	PANTONE SERIGRAPHIE
White	White
Black	Black
Navy	433C
Dark grey	447C
Angora	482C
Red	200C
Sky blue	278C
Light khaki	7764C

MEASUREMENT						
Description	XS	S	M	L	XL	XXL
W01 (M) Longueur encolure / Neckline length	37,50	38,75	40	41,25	42,50	43,75
H09 (M) Hauteur totale devant / Front total height	66	68	70	72	74	76
W05 (L) 1/2 largeur poitrine à 1.5cm de l'emmanchure / 1/2 chest width at 1.5cm below armhole	47	50	53	56	59	62
H15B (M) Longueur manche avec poignet / Sleeve length with cuff	59	60	61	62	63	64
H32 (M) Hauteur poche devant / Front pocket height	12	12	12	13	13	14
W32 (M) Largeur poche devant / Front pocket width	10	10	10	11	11	12

CARE LABEL

PACKING	
Box	20 pcs / box XS => L:52cm W:36cm H:33cm GW:6.70kg NW:5.45kg S => L:52cm W:36cm H:33cm GW:7.00kg NW:5.75kg M => L:52cm W:36cm H:33cm GW:7.10kg NW:5.85kg L => L:52cm W:36cm H:33cm GW:7.50kg NW:6.25kg XL => L:52cm W:36cm H:33cm GW:8.00kg NW:6.75kg XXL => L:52cm W:36cm H:33cm GW:8.15kg NW:6.90kg