

KARIBAN

REFERENCE : K513

SIZES : XS_S_M_L_XL_XXL_3XL

COMPOSITION :

Main fabric : Cotton poplin - 125 100%cotton

WEIGHT :

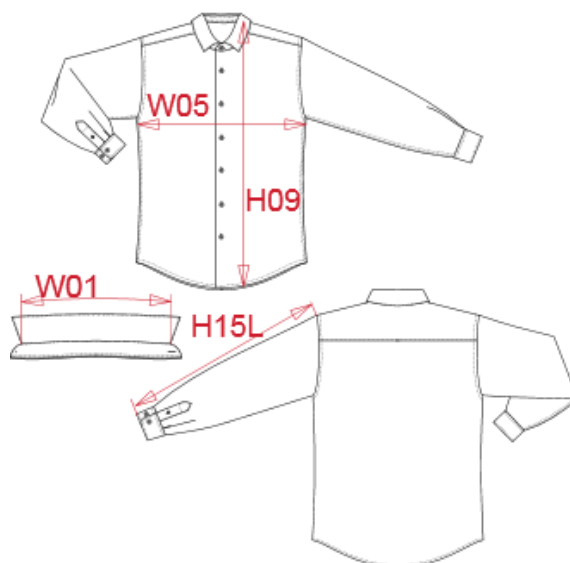
Main fabric : 125 gsm

TECHNICAL DETAIL :

Easy care finish

ARTICLE WEIGHT :

230 gr/pc



DESCRIPTION
Français : Chemise popeline manches longues homme
English : Men's long sleeve poplin shirt
Nederlands : Herenoverhemd in popeline met lange mouwen
Deutsch : Langärmeliges Popeline-Herrenhemd
Español : Camisa de popelina de manga larga para hombre
Italiano : Camicia uomo popeline maniche lunghe
Português : Camisa de homem em popeline de manga comprida

COLORS	PANTONE SERIGRAPHIE
White	White
Black	Black
Navy	433C
Bright sky	2708C
Striped pale blue / White	277C / White

MEASUREMENT							
Description	XS	S	M	L	XL	XXL	3XL
W05 1/2 largeur poitrine à 1.5cm de l'emmanchure / 1/2 chest width at 1.5cm below armhole	48	51	54	57	60	63	66
H09 (M) Hauteur totale devant / Front total height	72,50	74,50	76,50	78,50	80,50	82,50	84,50
W01 Longueur encolure / Neckline length	39,25	40,50	41,75	43	44,25	45,50	46,75
H15L (M) Longueur manche longue / Long sleeve length	63	64	65	66	67	68	69

CARE LABEL

PACKING	
Box	12 pcs / box XS => L:60cm W:40cm H:20cm GW:5.15kg NW:3.35kg S => L:60cm W:40cm H:20cm GW:5.30kg NW:3.50kg M => L:60cm W:40cm H:20cm GW:5.45kg NW:3.65kg L => L:60cm W:40cm H:20cm GW:5.65kg NW:3.85kg XL => L:60cm W:40cm H:20cm GW:5.75kg NW:3.95kg XXL => L:60cm W:40cm H:20cm GW:5.90kg NW:4.10kg 3XL => L:60cm W:40cm H:20cm GW:6.10kg NW:4.30kg