

PR690 'Rose' Beauty and Spa Tunic

Description

The 'Rose' features an elegant self-coloured satin trim across the main body of the tunic to create the impression of a wrap-over style. The trim comes down from the shoulder, across the chest and finishes under the bust to create a flattering V-neck finish on the neckline. Bust darts and side vents make this a very flattering tunic.

Product Features:

- Flattering feminine fit with bust and back darts
- Satin trim creating the illusion of a wrap tunic
- Pull-on style with back zip fastening
- Princess seams

Available In:

6, 8, 10, 12, 14, 16, 18, 20, 22, 24

Certifications:

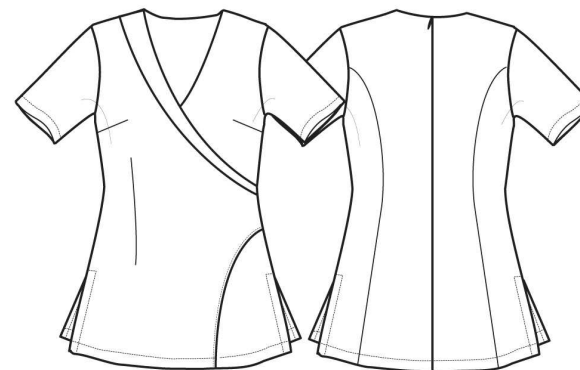


Colours:

Colour	Pantone	C	M	Y	K
Black	Black c	0	0	0	100

Fabric:

100% Polyester plain weave, 185gsm.



Suggested Decoration:

Screen Print, Transfer Print, Embroidery

Country of Origin:

China

Commodity Code:

6211 43 1000

Features:

EASY CARE

Wash Care:



Carton Information:

Sizes	Carton	Pack	SKU's	Carton Weight	Carton Dimensions
All Sizes	12	3	10	6.2kg	60cm x 44cm x 17cm

Garment Sizes:

Size	6	8	10	12	14	16	18	20	22	24
Bust to fit"	31	33	35	37	39	41	43	45	47	49
Bust to fit cm	79	84	89	94	99	104	109	114	119	124
Bust actual cm	89	94	99	104	109	114	120	126	132	138
Call size	2XS	XS	S	M	L	XL	2XL	3XL	4XL	5XL
Back length cm	70	71	72	72	73	74	75	76	77	78