

KARIBAN

REFERENCE : K6111

SIZES : XS_S_M_L_XL_XXL

COMPOSITION :

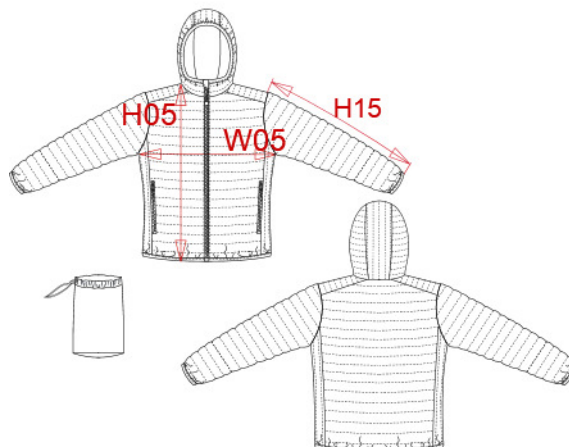
Main fabric : Polyamide 380T PA coating- 35 For Garment and packable bag 100%polyamide

Fabric : Polyester 380T PA coating - 45 For Garment and packable bag 100%polyester

Main fabric : Polyamide 380T PA coating- 35 For inside garment and pockets 100%polyamide

Wad 1 : Padding Polyester fake down (micro broken) - 260/270

Inside body,sleeve and hood 100%polyester



WEIGHT :

Main fabric : 35 gsm

Fabric : 45 gsm

Main fabric : 35 gsm

Wad 1 : 260/270 gsm

TECHNICAL DETAIL :

Coating for fake down proof

ARTICLE WEIGHT :

465 gr/pc

DESCRIPTION								COLORS		PANTONE SERIGRAPHIE	
Français : Doudoune légère capuche femme								Black	Black		
English : Ladies' lightweight hooded down jacket								Navy	433C		
Nederlands : Lichte damesjas met capuchon								Light royal blue	653C		
Deutsch : Leichte Damen-Steppjacke mit Kapuze								Red	200C		
Español : Chaqueta acolchada ligera con capucha para mujer								Marl dark grey	Based on 446C		
Italiano : Piumino donna leggero con cappuccio								Marl silver	Based on 877C		
Português : Blusão de senhora acolchoado leve com capuz								White	White		
								Wine	504C		
MEASUREMENT											
Description	XS	S	M	L	XL	XXL					
H05 (L) Hauteur totale / Total height	60	62	64	66	68	70					
W05 1/2 largeur poitrine terminée/ 1/2 chest width after sewing	46	49	52	55	58	61					
H15 Longueur manche / Sleeve length	64	65	66	67	68	69					
CARE LABEL											
PACKING											
Box	15 pcs / box XS => L: 60cm W: 40cm H: 35cm GW: 6.2kg NW: 5.2kg S => L: 60cm W: 40cm H: 35cm GW: 6.4kg NW: 5.4 kg M => L: 60cm W: 40cm H: 35cm GW: 6.8kg NW: 5.8 kg L => L: 60cm W: 40cm H: 35cm GW: 6.9kg NW: 5.9kg XL => L: 60cm W: 40cm H: 40cm GW: 7.1kg NW: 6.1 kg XXL => L: 60cm W: 40cm H: 40cm GW: 7.3kg NW: 6.3kg										