

KARIBAN

REFERENCE : K6110

SIZES : S_M_L_XL_XXL_3XL_4XL

COMPOSITION :

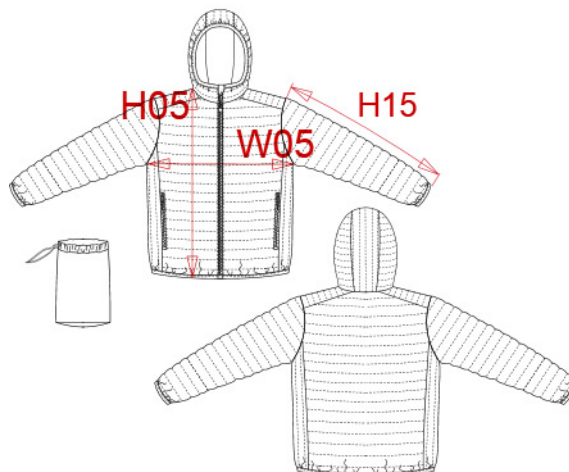
Main fabric : Polyamide 380T PA coating- 35 For Garment and packable bag 100%polyamide

Fabric : Polyester 380T PA coating - 45 For Garment and packable bag 100%polyester

Main fabric : Polyamide 380T PA coating- 35 For inside garment and pockets 100%polyamide

Wad 1 : Padding Polyester fake down (micro broken) - 260/270

Inside body,sleeve and hood 100%polyester



WEIGHT :

Main fabric : 35 gsm

Fabric : 45 gsm

Main fabric : 35 gsm

Wad 1 : 260/270 gsm

TECHNICAL DETAIL :

Coating for fake down proof

ARTICLE WEIGHT :

526 gr/pc

DESCRIPTION								COLORS		PANTONE SERIGRAPHIE													
Français : Doudoune légère capuche homme English : Men's lightweight hooded down jacket Nederlands : Lichte herenjas met capuchon Deutsch : Leichte Herren-Steppjacke mit Kapuze Español : Chaqueta acolchada ligera con capucha para hombre Italiano : Piumino uomo leggero con cappuccio Português : Blusão acolchoado leve com capuz								Black	Black	Navy	433C	Light royal blue	653C	Red	200C	Marl dark grey	Based on 446C	Marl silver	Based on 877C	White	White	Wine	504C
MEASUREMENT																							
Description	S	M	L	XL	XXL	3XL	4XL																
H05 Hauteur totale terminée / Total height after sewing	70	72	74	76	78	80	82																
W05 1/2 largeur poitrine terminée/ 1/2 chest width after sewing	54	57	60	63	66	69	72																
H15 Longueur manche / Sleeve length	68,75	69,75	70,75	71,75	72,75	73,75	74,75																
CARE LABEL																							
PACKING																							
Box	15 pcs / box S => L:60cm W:40cm H:40cm GW:8.8kg NW:7.2kg M => L:60cm W:40cm H:40cm GW:9.2kg NW:7.7kg L => L:60cm W:40cm H:40cm GW:9.5kg NW:8 kg XL => L:60cm W:40cm H:40cm GW:9.9kg NW:8.6kg XXL => L:60cm W:40cm H:42cm GW:10.5kg NW:8.7kg 3XL => L:60cm W:40cm H:42cm GW:10.9kg NW:8.9kg 4XL => L:60cm W:40cm H:42cm GW:11.2kg NW:9.3kg																						