

KARIBAN

REFERENCE : K558

SIZES : XS_S_M_L_XL_XXL_3XL_4XL

COMPOSITION :

Main fabric : Polyester / Cotton poplin 65/35 - 105 For white colour 65%polyester / 35%cotton

Main fabric : Polyester / Cotton poplin 65/35 - 110 For colours 65%polyester / 35%cotton

WEIGHT :

Main fabric : 105 gsm

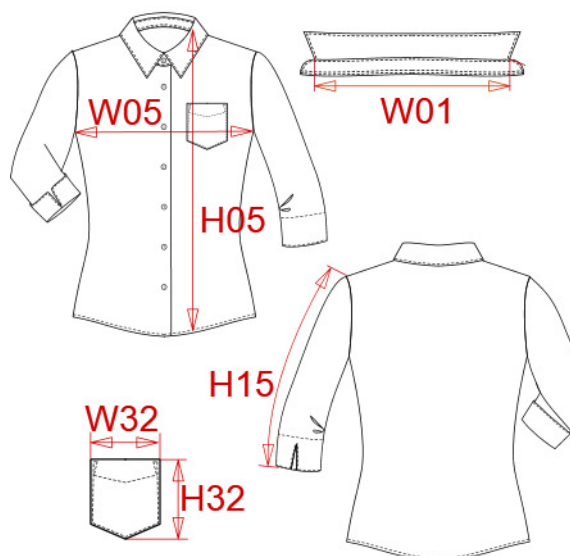
Main fabric : 110 gsm

TECHNICAL DETAIL :

Easy Care

ARTICLE WEIGHT :

130 gr/pc



DESCRIPTION	
Français : Chemise manches 3/4 femme	
English : Ladies' 3/4 sleeve shirt	
Nederlands : Damesblouse met 3/4 mouw	
Deutsch : 3/4-Arm-Damenbluse	
Español : Camisa con mangas 3/4 para mujer	
Italiano : Camicia donna con maniche 3/4	
Português : Camisa de senhora manga 3/4	

COLORS	PANTONE SERIGRAPHIE
White	White
Black	Black
Bright turquoise	638C
Classic red	1945C
Navy	433C
Bright sky	2708C
Wine	504C
Angora	482C
Urban grey	Cool gray 10C
Pale pink	692C

MEASUREMENT									
Description	XS	S	M	L	XL	XXL	3XL	4XL	
W01 Longueur encolure / Neckline length	36,75	38	39,25	40,50	41,75	43	44,25	45,50	
W05 1/2 largeur poitrine/1/2 chest width	43,50	46,50	49,50	52,50	55,50	58,50	61,50	64,50	
H05 (L) Hauteur totale / Total height	63,25	65,25	67,25	69,25	71,25	73,25	75,25	77,25	
H15 Longueur manche / Sleeve length	44	45	46	47	48	49	50	51	
H32 Hauteur poche devant / Front pocket height	11	11	12	12	13	13	14	14	
W32 Largeur poche devant / Front pocket width	9	9	10	10	11	11	12	12	

CARE LABEL				

PACKING	
Box	12 pcs / box XS => L:60cm W:40cm H:16cm GW:4.01kg NW:2.29kg S => L:60cm W:40cm H:16cm GW:4.07kg NW:2.35kg M => L:60cm W:40cm H:16cm GW:4.19kg NW:2.47kg L => L:60cm W:40cm H:16cm GW:4.30kg NW:2.58kg XL => L:60cm W:40cm H:16cm GW:4.43kg NW:2.71kg XXL => L:60cm W:40cm H:16cm GW:4.52kg NW:2.80kg 3XL => L:60cm W:40cm H:16cm GW:4.67kg NW:2.95kg 4XL => L:60cm W:40cm H:16cm GW:4.78kg NW:3.06kg