

KARIBAN

REFERENCE : K250

SIZES : S_M_L_XL_XXL_3XL

COMPOSITION :

Main fabric : Combed cotton single Lacoste pique - 220 For solid colors 100%cotton

Main fabric : Combed Cotton / Viscose Lacoste pique 90/10 - 220 For heather colors 90%cotton / 10%viscose

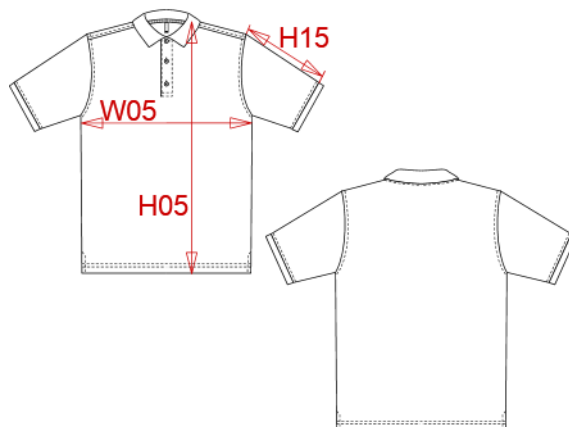
WEIGHT :

Main fabric : 220 gsm

Main fabric : 220 gsm

ARTICLE WEIGHT :

240 gr/pc



DESCRIPTION								COLORS		PANTONE SERIGRAPHIE	
Français : Polo manches courtes homme								White / Navy / Red	White / 433C / 200C		
English : Men's short sleeve polo shirt								Navy / Red / White	433C / 200C / White		
Nederlands : Heren piqué polo korte mouwen								Black / Light grey / White	Black / 402C / White		
Deutsch : HERREN KURZARM PIQUE POLO								Red / Navy / White	200C / 433C / White		
Español : Polo piqué de manga corta para hombre								Light royal blue / Red / White	653C / 200C / White		
Italiano : POLO UOMO MANICHE CORTE								Navy / Light grey / White	433C / 402C / White		
Português : Polo manga curta								Sky blue / Navy / White	5425C / 433C / White		
MEASUREMENT								Oxford grey / Navy / White	Base Cool gray 7C/296C/White		
Description	S	M	L	XL	XXL	3XL		Black / Red / White	Black / 200C / White		
H05 (M) Hauteur totale / Total height	70	72	74	76	78	80		Light royal blue / Yellow / White	653C / 1235C / White		
W05 (M) 1/2 largeur poitrine / 1/2 chest width	49	52	55	58	61	64		Kelly green / Light grey / White	7727C / 402C / White		
H15I (M) Longueur manche avec bord côte / Sleeve length with rib	21,25	22	22,75	23,50	24,25	25		Navy / Wine / White	433C / 504C / White		
CARE LABEL								Black / Red / Yellow	Black / 200C / 1235C		
								White / Sky blue / Light grey	White / 278C / 402C		
PACKING											
Box	25 pcs / box S => L:60cm W:40cm H:15cm GW:7.2kg NW:5.64kg M => L:60cm W:40cm H:15cm GW:7.6kg NW:6.04kg L => L:60cm W:40cm H:15cm GW:8.22kg NW:6.47kg XL => L:60cm W:40cm H:16cm GW:8.4kg NW:6.85kg XXL => L:60cm W:40cm H:16cm GW:9.03kg NW:7.32kg 3XL => L:60cm W:40cm H:16cm GW:9.2kg NW:7.5kg										