

KARIBAN

REFERENCE : K521

SIZES : 6/8_8/10_10/12_12/14

COMPOSITION :

Main fabric : Cotton poplin - 125 100%cotton

WEIGHT :

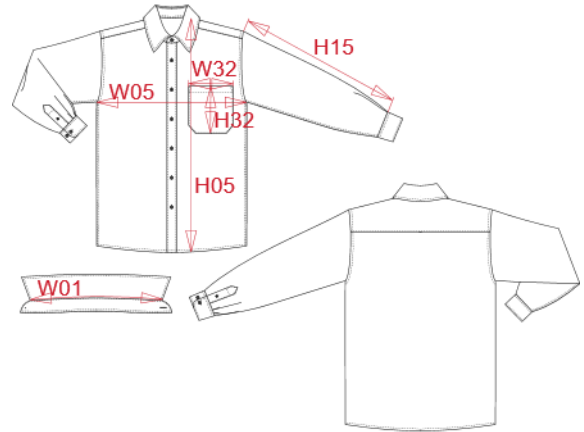
Main fabric : 125 gsm

TECHNICAL DETAIL :

Easy Care

ARTICLE WEIGHT :

145 gr/pc



DESCRIPTION
Français : Chemise popeline manches longues enfant
English : Kid's long sleeve popeline shirt
Nederlands :
Deutsch : LANGARM POPELINEHEMD FÜR KINDER
Español : CAMISA DE MANGA LARGA POPELINA PARA NIÑO
Italiano : CAMICIA BAMBINO POPELINE MANICHE LUNGHE
Português : Camisa de criança manga comprida em popeline

COLORS	PANTONE SERIGRAPHIE
White	White
Navy	433C

MEASUREMENT						
Description	6/8	8/10	10/12	12/14		
W01 Longueur encolure / Neckline length	32,30	34	35,70	37,30		
W05 1/2 largeur poitrine / 1/2 chest width	39	42	45	48		
H15 Longueur manche sans poignet / Sleeve length without cuff	40,60	44,60	48,60	52,60		
H05 Hauteur totale dos / Back total height	53	59	64	69		
H32 Hauteur poche devant / Front pocket height	11	11,50	11,50	12		
W32 Largeur poche devant / Front pocket width	9	10	10	10,50		

CARE LABEL

PACKING	
Box	12 pcs / box 6/8 =>L:60cm W:40cm H:17cm GW:4.00kg 10/12=>L:60cm W:40cm H:17cm GW:4.38kg 12/14=> L:60cm W:40cm H:17cm GW:4.63kg