

KARIBAN

REFERENCE : K520

SIZES : 6/8_8/10_10/12_12/14

COMPOSITION :

Main fabric : Cotton poplin - 125 100%cotton

WEIGHT :

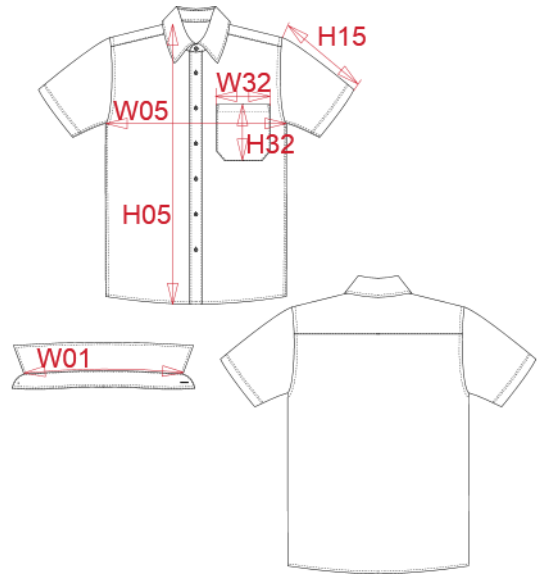
Main fabric : 125 gsm

TECHNICAL DETAIL :

Easy care

ARTICLE WEIGHT :

125 gr/pc



DESCRIPTION
Français : Chemise popeline manches courtes enfant
English : Kid's short sleeve popeline shirt
Nederlands :
Deutsch : KURZARM POPELINEHEMD FÜR KINDER
Español : CAMISA DE MANGA CORTA POPELINA PARA NIÑO
Italiano : CAMICIA BAMBINO POPELINE MANICHE CORTE
Português : Camisa de criança manga curta em popeline

COLORS	PANTONE SERIGRAPHIE
White	White
Navy	433C

MEASUREMENT						
Description	6/8	8/10	10/12	12/14		
W01 Longueur encolure / Neckline length	32,40	34	35,60	37,30		
W05 1/2 largeur poitrine / 1/2 chest width	39	42	45	48		
H15 Longueur manche / Sleeve length	16,10	19,10	22,10	25,10		
H05 Hauteur totale dos / Back total height	54	59	64	69		
H32 Hauteur poche devant / Front pocket height	11	11,50	11,50	12		
W32 Largeur poche devant / Front pocket width	9,50	10	10	10,50		

CARE LABEL				

PACKING	
Box	12 pcs / box All sizes => L:52cm W:34cm H:20cm GW:4.5kg NW:2.9kg