

## PR682 'Orchid' Beauty and Spa Tunic

### Description

The 'Orchid' is available in twelve colours and features an asymmetric design with eight 'bar' buttons down the front. The side vents and princess seams create a flattering fit whilst the short sleeves and back pleat allow complete ease of movement.

### Product Features:

- Flattering feminine fit with bust and back darts
- Mandarin collar
- Eight 'bar' button fastening
- Back pleat for ease of movement
- Princess seams

### Available In:

6, 8, 10, 12, 14, 16, 18, 20, 22, 24

### Certifications:

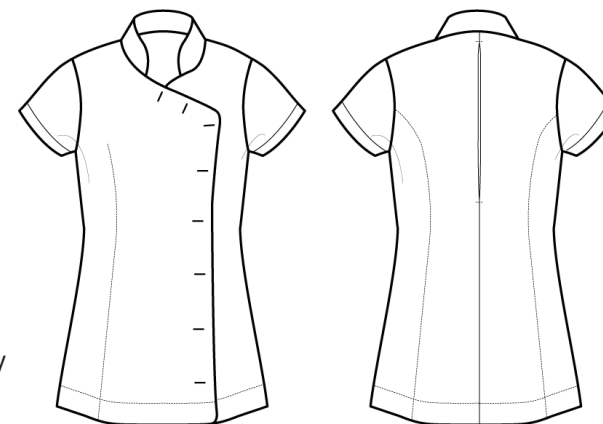


### Colours:

Colour	Pantone	C	M	Y	K
Aubergine	7449c	65	98	21	83
Black	Black c	0	0	0	100
Burgundy	209c	20	97	40	58
Dark Grey	425c	52	29	30	78
Hot Pink	215c	66	100	26	24
Lime	2304c	37	9	83	11
Navy	533c	95	72	15	67
Purple	7447c	77	85	6	18
Sapphire	2144c	95	53	0	0
Silver	429c	21	11	9	23
Turquoise	7703c	79	2	10	11
White	White	0	0	0	0

### Fabric:

100% Polyester plain weave, 185gsm.



### Suggested Decoration:

Screen Print, Transfer Print, Embroidery

### Country of Origin:

China

### Commodity Code:

6211 43 1000

### Features:



### Wash Care:



### Carton Information:

Sizes	Carton	Pack	SKU's	Carton Weight	Carton Dimensions
All Sizes	12	3	120	6.2kg	60cm x 44cm x 17cm

### Garment Sizes:

Size	6	8	10	12	14	16	18	20	22	24
Bust to fit"	31	33	35	37	39	41	43	45	47	49
Bust to fit cm	79	84	89	94	99	104	109	114	119	124
Bust actual cm	89	94	99	104	109	114	120	126	132	138
Call size	2XS	XS	S	M	L	XL	2XL	3XL	4XL	5XL
Back length cm	70	71	72	72	73	74	75	76	77	78